

Overcoming Digital Infrastructure Boundaries

Accelerating Digital Transformation for Indian Organizations

IDC Doc. #AP241310IB



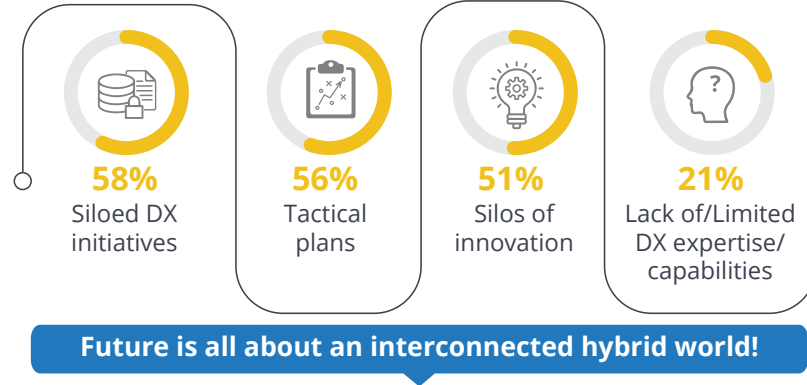
Sponsored by



Indian Organizations Digital Transformation (DX) State: Current vs Future

DX challenges that will be priorities for Indian enterprises in the next 18-24 months

Only **15%** of the Indian organizations have a fully integrated DX platform



- ◆ Enterprises are re-examining the readiness of their technology architectures to overcome challenges of legacy infrastructure, lack of scalability and the data deluge
- ◆ Organizations are reinventing workflows by developing a digital-first business model, to gain competitive advantage and to be future-ready



Hybrid cloud
Private + Public



Hybrid portfolios
SaaS applications targeted at functional areas



Hybrid by-design work models
Connectivity and support delivery



Hybrid industry ecosystems
New business models

Top 3 goals for Indian businesses over the next 5 years

31% Innovate or deliver new products or services

26% Invest in research and development

25% Expand geographically

To achieve these goals enterprises need to focus on:

Largest IT investments wrt DX:

- ◆ Cloud (40%)
- ◆ Data analytics (40%)
- ◆ Remote access and collaboration (34%)

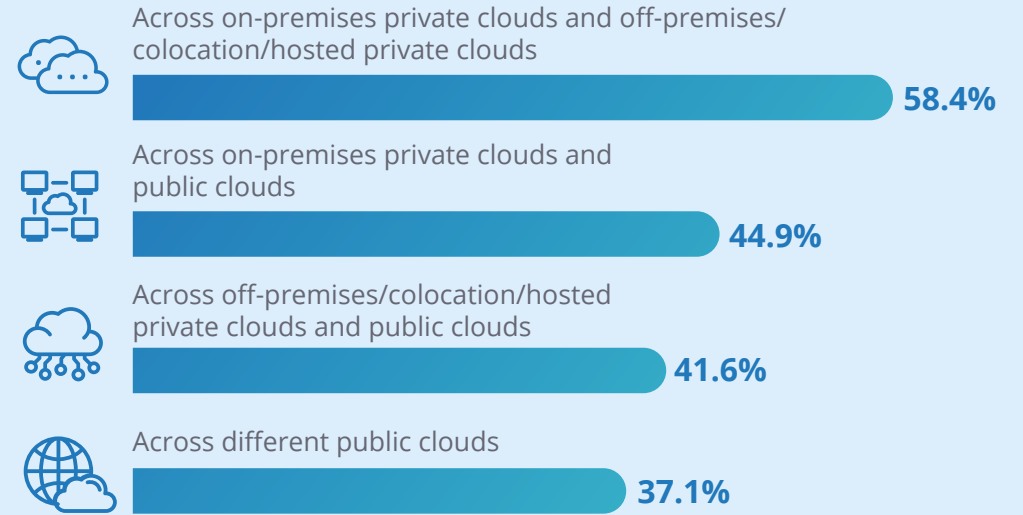
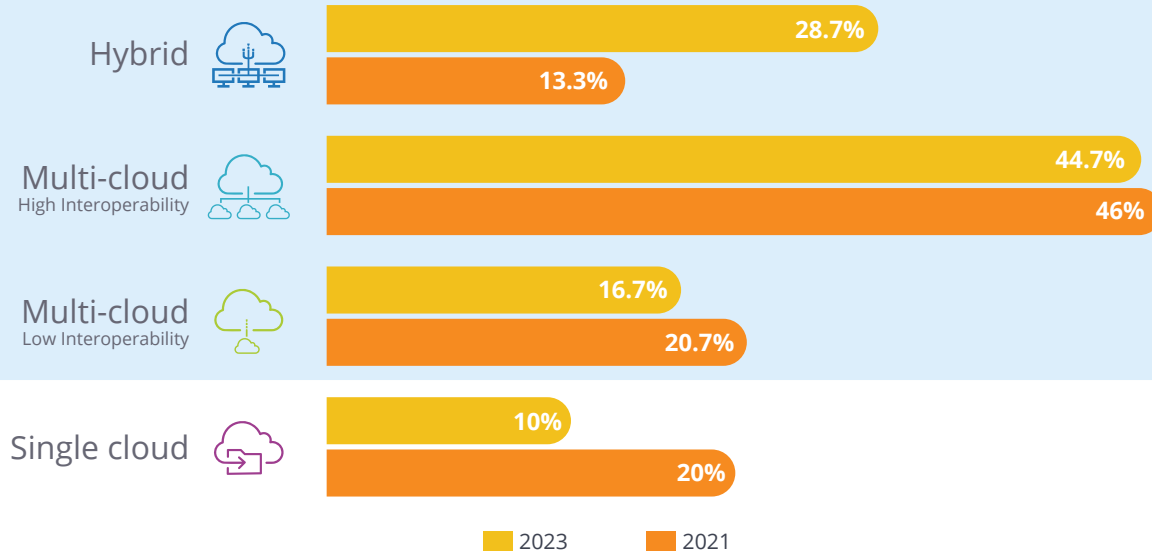
Access to ecosystem players in prime locations, ensuring connectivity at customer locations

Rethink their current enterprise digital infrastructure strategy: Need to create a technology architecture that enables reliable digital services and experiences

Source: IDC's APJ Business and Technology Leaders' Impact Survey 2021 (N = 100 for India); IDC CloudPulse Survey, Q321, India

Cloud as an Enabler of Digital Transformation

Hybrid and multi-cloud are the norm



The efficacy of digital platforms relies on supporting hybrid environment and is the backbone to all things digital.

The transition to cloud-centric infrastructure necessitates enterprises to:

- ◆ Plan the ideal location for each workload
- ◆ Ensure application and data interoperability
- ◆ Establish environments that support distributed architectures
- ◆ Leverage reliable, secure and low latency public cloud connectivity, across multiple cloud service providers



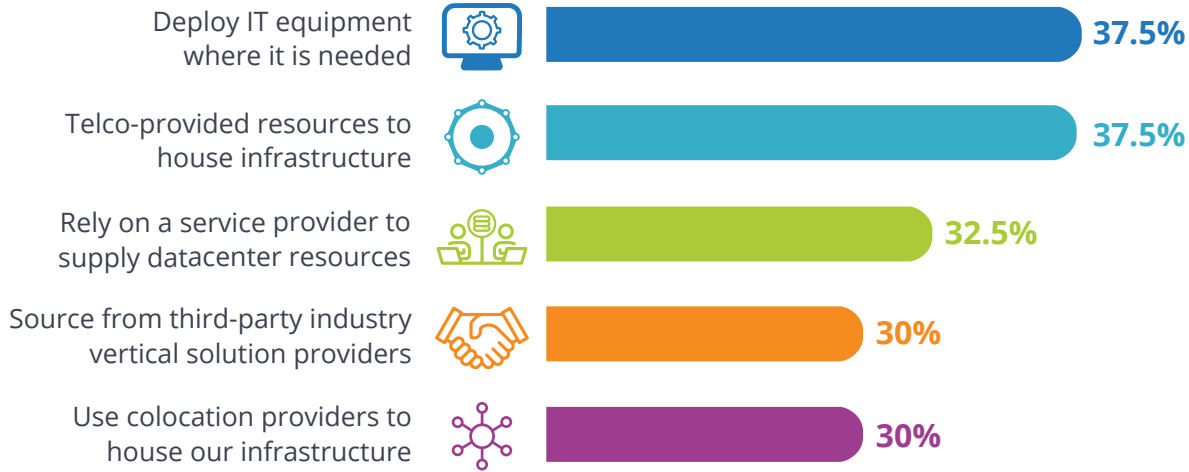
Zoom

Driven by the need to meet customer demand for greater scalability and security, Zoom leverages interconnection to quickly set up and scale its access to networks, clouds, partners and customers.


Source: IDC Asia/Pacific Cloud Survey 2021, June 2021, n=150 for India;


Enterprise Periphery Extends to Edge

Top 5 plans to deploy IT services at the edge in 2023



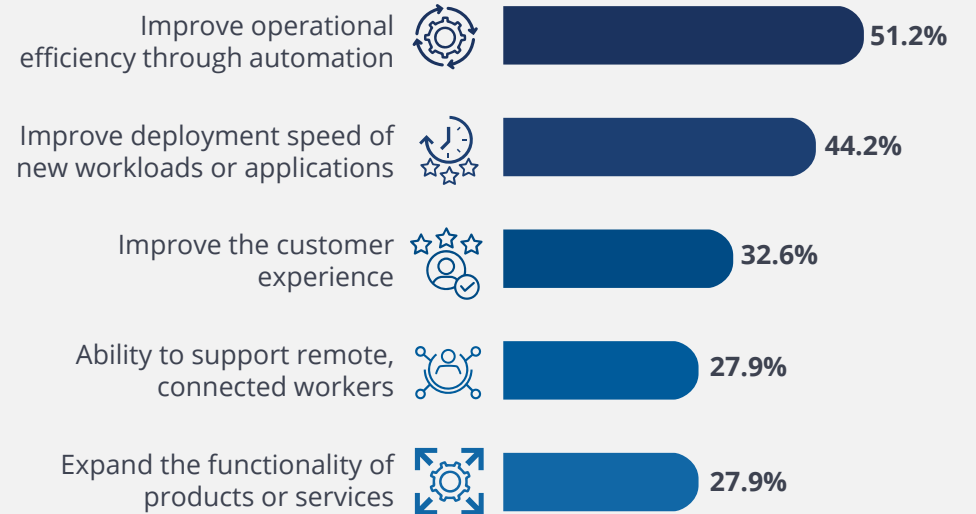
Edge environments are gaining traction on boardroom agenda driven by:

 Various factors including improved operational efficiency through automating processes, shorter time to deploy new workloads, enhanced customer experience, and the ability to support remote, connected workers.

 The need to be adjacent to the end customers while providing enhanced customer experience requires local analytics.

The ideal state, thus, mandates infrastructure in prime locations with localized association between user services and data, and access to clouds and ecosystem partners.

Top 5 benefits of edge deployment



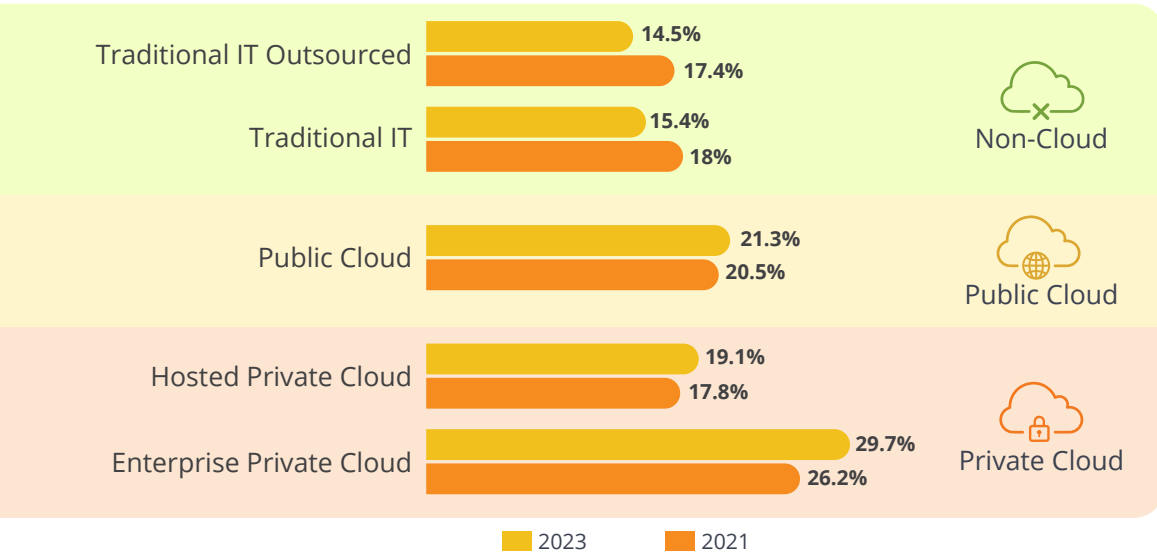
Precision Robotics (a surgical robotics startup from Imperial College)

Driven by the need to invest in advanced machine learning engine to meet its compute-intensive modeling and training workload for the development of next generation surgical robots, the company leverages the power of digital infrastructure, including private cloud environment, data storage, processing needs, and machine learning support.

Source: IDC APAC Datacenter Operations Survey 2021, Dec 2021, n=43 for India;

Data Deluge: A Barrier to Digital Transformation

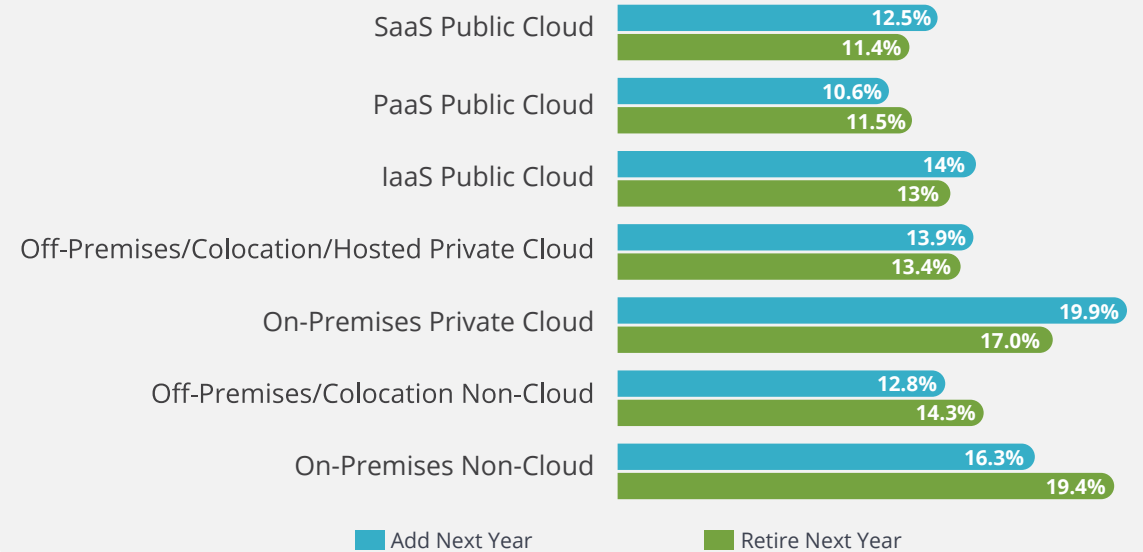
Applications deployed across varied environments 2021 vs 2023



With applications, workloads and data spread across various on-premises, off-premises and traditional environment, the interdependencies are all set to surge intensely in coming 2 years.

- ◆ This results in the need to orchestrate and integrate the applications and data for manageability and cost efficacy.
- ◆ Complex application and data landscape fuels the ask for flexible and secure connections to the ecosystems.

Application migration strategies for 2022 - 2023



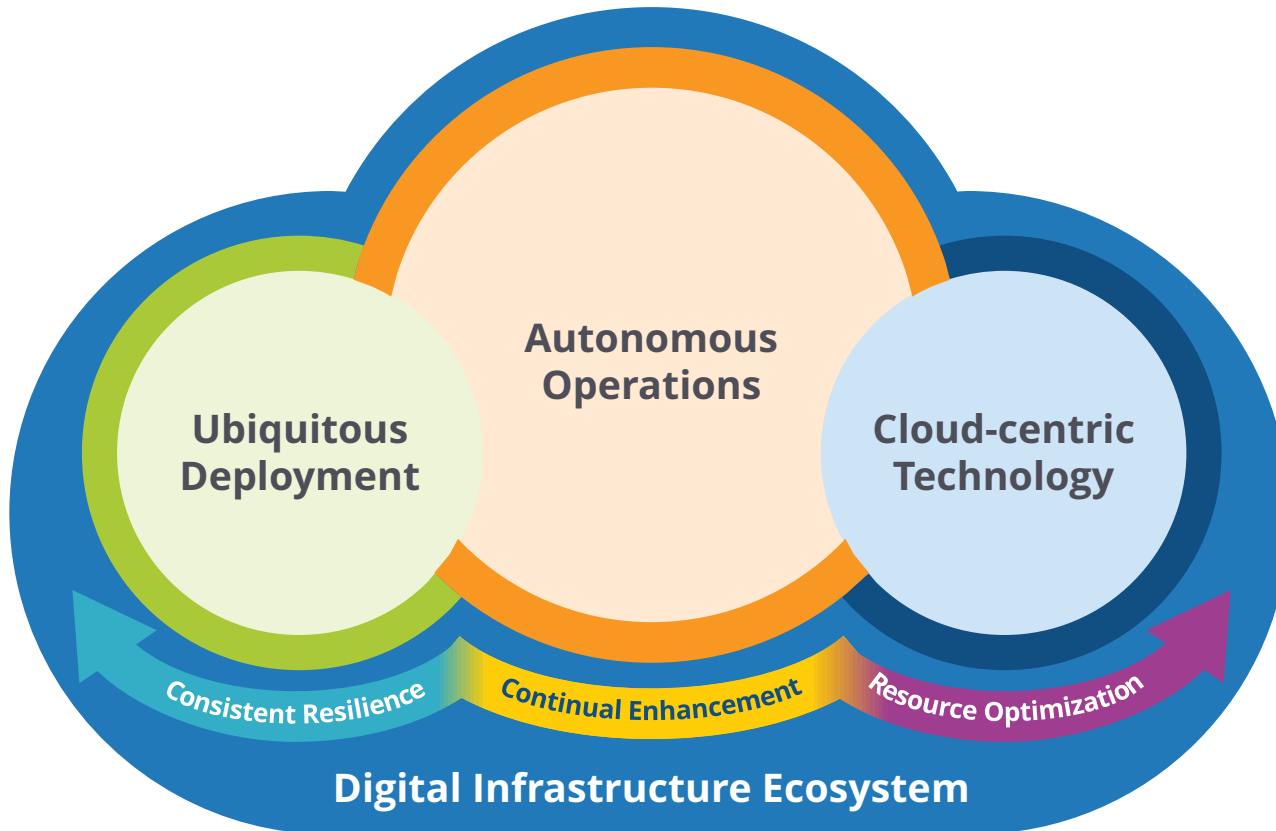
Children's Cancer Institute

Driven by the need to support fast data exchange and complex genomic profiling, the organization leverages an interconnection platform to connect to a variety of private cloud providers, network service providers and cancer research institutions across the globe.

Source: IDC Asia/Pacific Cloud Survey 2021, June 2021, n=150 for India;

Future of Digital Infrastructure: Strategy in the Multi & Hybrid Cloud World

Future of Digital Infrastructure is imperative for accelerated delivery of reliable digital services and experiences



Defining Future of Digital Infrastructure

The emerging digital infrastructure ecosystem, increasingly built on a **cloud foundation**, focuses on ensuring ever faster delivery of **innovative infrastructure hardware, software, resource abstraction**, and **process technologies** to support the development and continual refinement of **resilient digital services** and **digital experiences**.

Why Future of Digital Infrastructure?

- ◆ This interconnection of applications, businesses and clouds mandates the readiness of digital infrastructure
- ◆ Future of Digital Infrastructure enables:



Swift application and workload delivery, resilience and flexibility



Easy management of distributed environments from cloud to edge



Local access between user services and data, and access to clouds and ecosystem partners

Source : IDC Future of Digital Infrastructure: Ever Faster Delivery of Reliable Digital Services and Experiences

Essential guidance: Rethink Your Digital Infrastructure for Successful Digital Transformation

What does the future hold?

By 2024, Indian enterprise leaders will prioritize business objectives over infrastructure choice, deploying **50%** of new strategic workloads using vendor-specific APIs that add value but reduce workload portability.

By 2025, a **6X** explosion in high-dependency workloads will lead to **50%** of large enterprises using consistent architectural governance frameworks to ensure compliance reporting and audit of their infrastructure.

By 2024, due to an explosion of edge data, **45%** of large Indian enterprises will embed edge-first data stewardship, security, and network practices into data protection plans to integrate edge data into relevant processes.

For gaining digital supremacy



Shift to cloud-centric infrastructure

Movement and management of diverse and distributed environments, with the goal to connect across locations and geographies is paramount



Edge deployment

Develop cloud-adjacent data infrastructure to leverage cloud analytics, reduce latency and ecosystem exchange



Identify and work with a right partner

Identify a right partner that supports the organization's digital strategy: connects across environments, provides reliability, uptime and supports the long term goals of innovation and geographical expansion



Integrate ecosystem

As enterprises progress forward the need to be connected to the ecosystem is supreme for faster innovation and growth. An interconnection partner that helps in collaborating with cloud, internet exchanges, and the broader ecosystem is pivotal!

Source: IDC FutureScape: Worldwide Future of Digital Infrastructure 2022 Predictions — India Implications

Fast-track your digital advantage

Work with trusted Equinix advisers to balance on-premises, private and public clouds, and networks for the best fit. Extend your reach physically and virtually to new markets and possibilities across the globe.

5 Continents 27 Countries 65+ Metro areas 240+ Data centers



99.9999% reliability

10,000+ customers

419k+ interconnections

100% renewable power pledge

>10,000 employees

Learn more about the case studies mentioned in this InfoBrief: [Zoom](#) [Precision Robotics](#) [Children's Cancer Institute](#)

Please contact Equinix for more information at <https://www.equinix.in/contact-us>.

Optimize your infrastructure

- Hybrid multicloud connectivity**
Simplify hybrid cloud networking with flexible, scalable connections to and between cloud providers in multiple locations across our software-defined network.
- Edge and branch connectivity**
Extend the reach of your digital infrastructure to edge and branch locations with secure, flexible connections to your network and SD-WAN service providers.
- Data center interconnection**
Improve how you manage data and applications including back up and short-term traffic spikes with private, reliable connections between data centers over our global software-defined network. Run systems monitoring and security protocols like MACsec with tagged/untagged traffic.
- Digital value chain connectivity**
Build an optimized network for digital services with scalable, low-latency connections to your value-chain service providers and partners both in the public cloud and in the data center.





IDC Asia/Pacific

83 Clemenceau Avenue
#17-01 UE Square, West Wing
Singapore 239920
T 65.6226.0330

[idc.com](https://www.idc.com)

[@idc](https://twitter.com/idc)

About IDC

International Data Corporation (IDC) is the premier global provider of market intelligence, advisory services, and events for the information technology, telecommunications, and consumer technology markets. IDC helps IT professionals, business executives, and the investment community make fact-based decisions on technology purchases and business strategy. More than 1,100 IDC analysts provide global, regional, and local expertise on technology and industry opportunities and trends in over 110 countries worldwide. For 50 years, IDC has provided strategic insights to help our clients achieve their key business objectives. IDC is a subsidiary of IDG, the world's leading technology media, research, and events company.

IDC Custom Solutions

This publication was produced by IDC Custom Solutions. The opinion, analysis, and research results presented herein are drawn from more detailed research and analysis independently conducted and published by IDC, unless specific vendor sponsorship is noted. IDC Custom Solutions makes IDC content available in a wide range of formats for distribution by various companies. A license to distribute IDC content does not imply endorsement of or opinion about the licensee.

Copyright 2022 IDC. Reproduction is forbidden unless authorized. All rights reserved.

Permissions: External Publication of IDC Information and Data

Any IDC information that is to be used in advertising, press releases, or promotional materials requires prior written approval from the appropriate IDC Vice President or Country Manager. A draft of the proposed document should accompany any such request. IDC reserves the right to deny approval of external usage for any reason. Email: ap_permissions@idc.com

IDC Doc. #AP241310IB